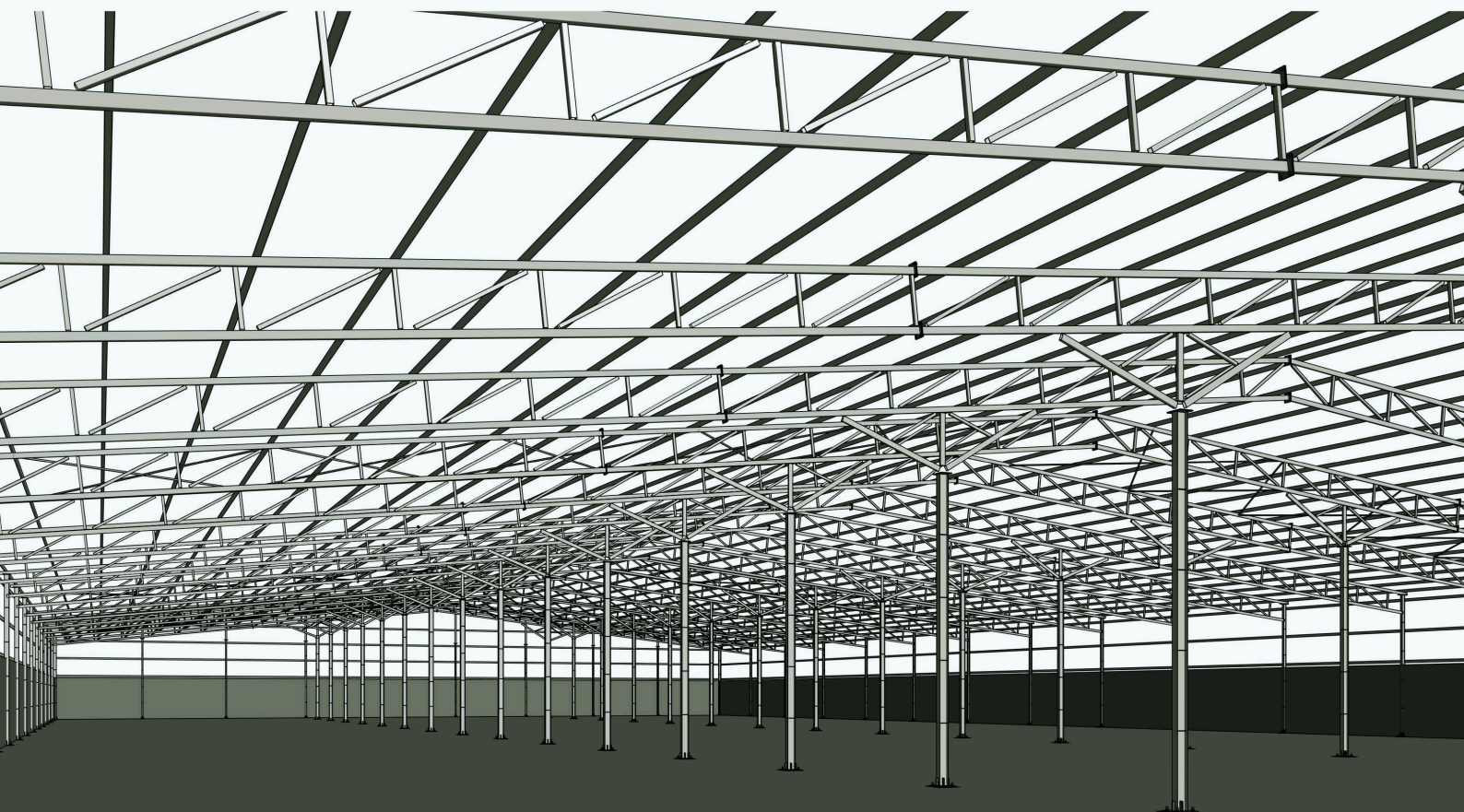


**The Metal That Makes Impossible Possible**



# About Us

---

## SIMPLE TRUSS WORK - STW

- Our beginning Our story began in 1984 founded.
- The initial focus on steel fabrication services.
- In 2008 expansion into overall engineering design consulting.

# Content

---

Our story -----	02
Our services-----	03
Our focus -----	04
Design and detailing-----	05
Types of structures -----	06
Contact Us -----	12

## Who we are

**STW** is a structural overall engineering design consulting and steel fabrication company.

We specialise in all forms of structural steel buildings and will design any form, shape or size you require.

Our business is refined by years of experience and powered by an ambition to meet the diverse and particular needs of our target market since 2008.

## Where we are heading

Leading steel and fabrication brand

We aim to establish STW as the leading steel and fabrication brand in Africa, characterised by world-class innovation & technology and leaving a legacy behind for generations to come.

## How we aim to get there

Through value engineering steel structures.

We hire top human capital and train them towards paramount service delivery and utmost client satisfaction. This way, we ensure healthy and long-lasting business relationships.

## Quality service

Unrivalled quality with satisfied clients.

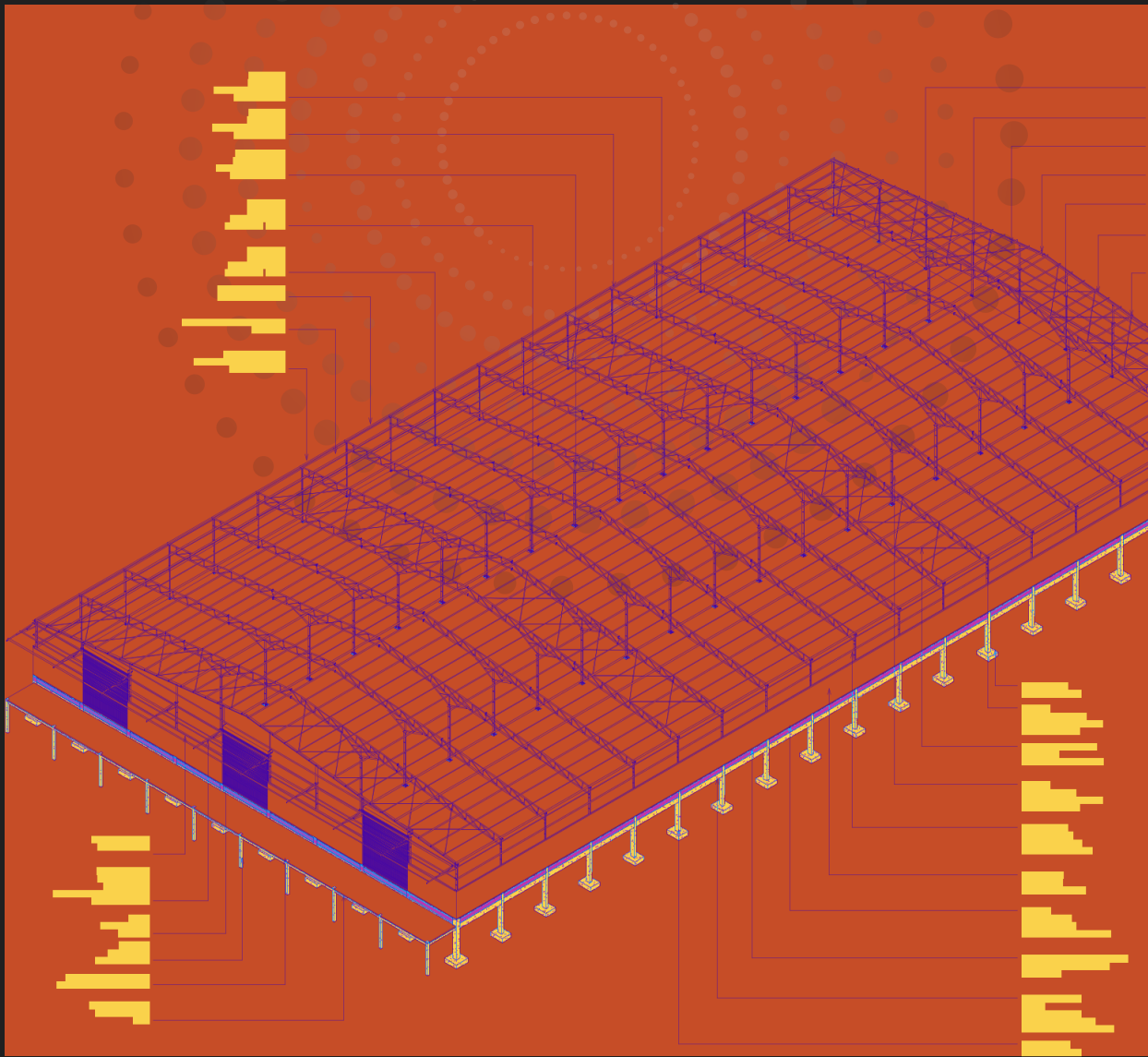
At **STW**, we firmly believe that superior quality combined with customer satisfaction is the only recipe for the way forward. These fundamentals paved our road to success

# Our Service

---

# 03

- Pre-construction consultation
- Design and detailing (3D models)
- Fabrication of steel structures
- Deliver and erect

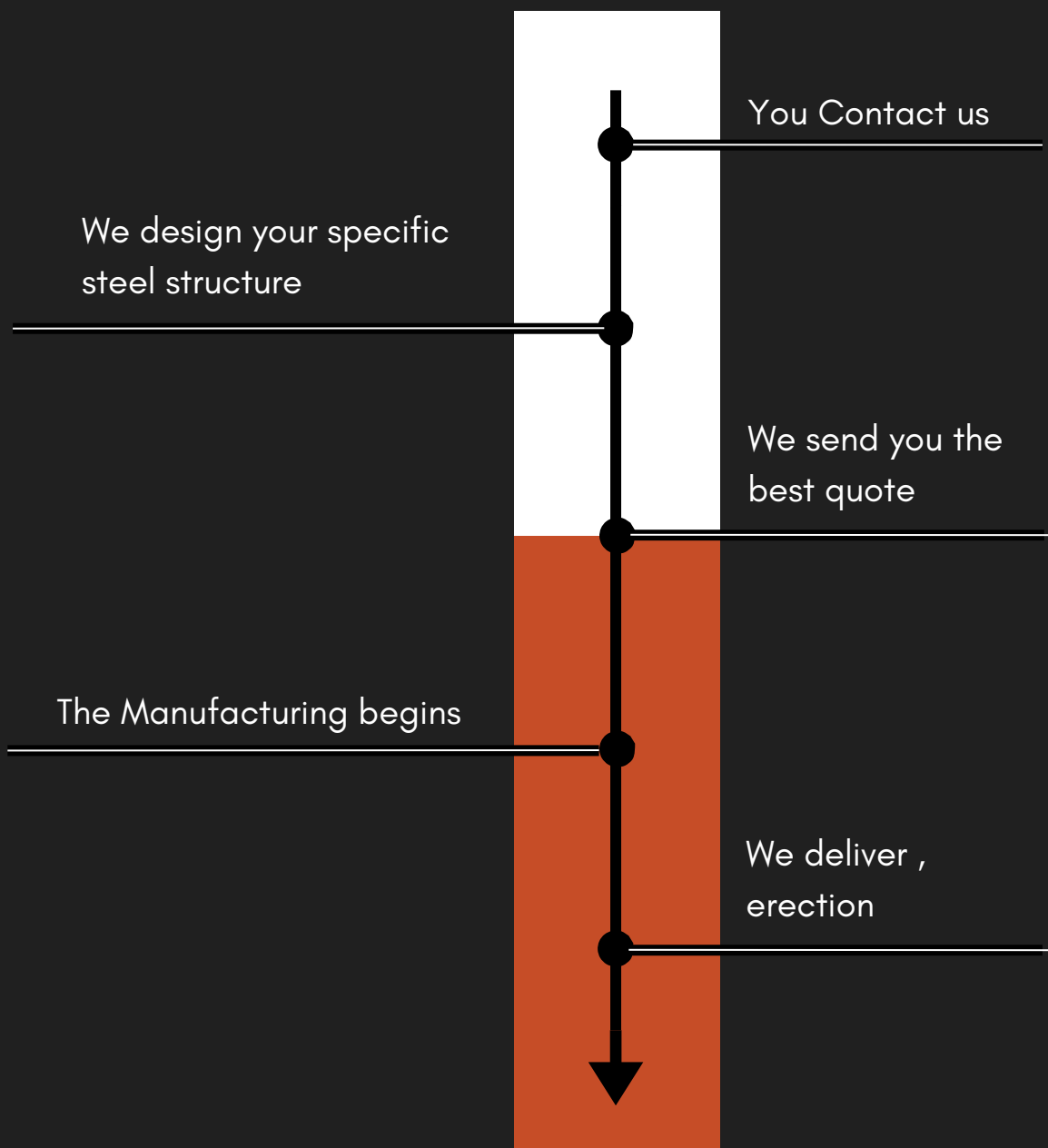




# Our Focus

# 04

- Our focus is primarily on our clients.
- The key benefits in contacting us first for a Pre-Construction Consultation results in high quality and value engineered structural steel projects.



## ■ Design and detailing

**With STW custom designs, we apply innovation to the steel industry and continuously aim to better conventional designs, providing you with tailormade precision and value-engineered designs.**

## Design Expertise:

- Conceptual Design
- Design Optimization
- Design Codes and Standards
- Structural Analysis
- 3D Modelling

## Detailing Expertise:

- Drawing Creation
- Connection Design
- Fabrication Considerations
- Estimation
- Annotated Details

## Additional value added services :

- - We design and construct bases for our structural steel buildings.
  - We can incorporate and design our steel buildings to be done with hollow core floor slabs and walling. This is installed simultaneously while the steel structure is installed, saving time without compromising the quality.
  - Gutters and downpipes, roller shutter doors, personnel doors, mezzanine floors, staircases.
  - We detail and install the roof sheeting and finishes. Add-ons can consist of polycarbonate sheets, louvres, ventilators, isolation (roof and/or walls), roof vents.

# Types of Structure

# 06

- PEB Structures
- Tubular structure – Manak Steel
- Commercial steel structures – G+2 building steel structure
- Industrial steel structures – Thakur Industries

## Project 01 – Manak Steel

Location – Bangalore

Site Area – 65000 sqft

Types of Structure – Tubular Structure



Overall View real time in Site



## Benefits of Tubular Structures

- **High Strength-to-Weight Ratio:** Tubular sections, especially circular ones, offer exceptional strength for their weight. This translates to lighter structures requiring less foundation support, reducing overall construction costs.
- **Faster Construction:** Due to their lightweight nature and ease of prefabrication, tubular structures can be assembled on-site more quickly compared to traditional methods. This leads to shorter construction timelines and potentially lower labor costs.



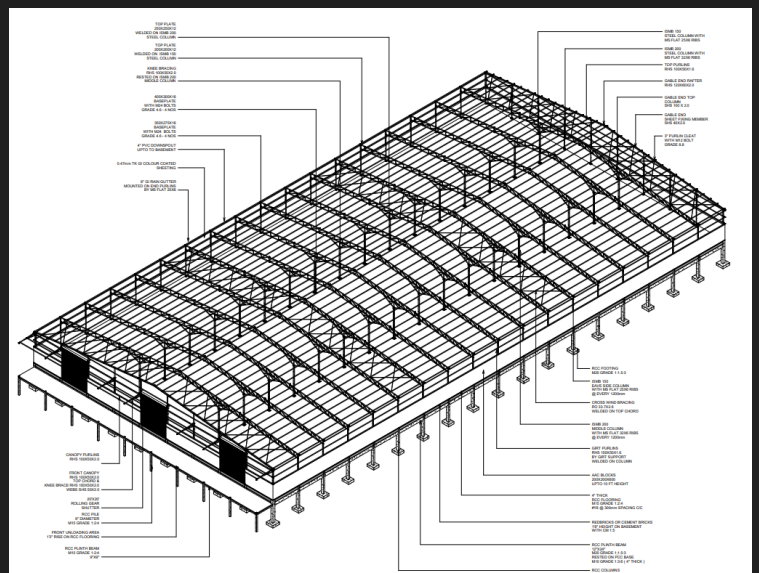
3D – Render

We have provide

- Architectural drawing
- 3D Modelling /Render
- Walkthrough
- Civil construction drawing
- Fabrication drawing
- Material and Labor estimate

DESCRIPTION	LENGTH in m	QTY	KG/NUMBER	TOTAL KG	AMOUNT
RHS 100X100X3.5	4876	816	22	17952	1166400
RHS 100X2	1434	239	17.64	4215.96	316197
RHS 100X100X2	2032	338.6667	27.06	9164.32	687324
RHS 113.7 X 2.6	630	105	11.94	1253.7	94027.5
RHS 120X100X2	114	19	32.7	621.3	46597.5
RHS 150 X 2.5					
RHS 40X2	126	21	13.86	291.06	21879.5
BASE PLATE 100X400X16	48	15.072	773.456	54219.2	
BASE PLATE 150X275X16	40	15.125	604.45	45333.75	
TOP PLATE 200X200X12	40	3.768	150.72	11304	
TOP PLATE 250X250X12	48	4.8	187.5	21195	
CONNECTION PLATE - MS FLAT 150 X 8	48	70.5	452.16	33912	
3" PURLIN CLEAT			140	10500	
PURLIN BOLT M12 GRADE 8.8	70.5	70	70	8400	
FOUNDATION BOLT M24 X 600	12	12	1408	140800	
ISMB 150 - 6 METER LENGTH 250 MPA	128	46	3420	256500	
ISMB 200 - 6 METER LENGTH 250 MPA	176	46	6679.2	500940	
MS FLAT 32X6	44	14	9.0432	81.8888	6104.16
MS FLAT 25X6	44	14	7.065	98.91	7418.25
SHEETING		QTY	AREA IN SQ	AMOUNT	
TOP ROOFING			5700	2508000	
SIDE CLADDING			1302	572880	
2M POLYCARBONATE SHEET			1.96	149600	
4 METER BEND SHEET	55 NOS		220	501200	
TOP RIDGE SHEET	104 METER			41600	
CORNER RIDGE SHEET	128 METER			51200	
ROLLING SHUTTER - 20 X 20- NOS			1200 SQ.FT	360000	
4" PVC DRAIN PIPE	130 METER			58800	
8" RAIN GUTTER	216 METER			99360	
TURBO VENT	68 NOS			272000	
TOTAL WEIGHT WITH ISMC 125 PURLINS			47609.2248		
LUMP SUMP				100000	

Estimate



3D Drawing

**Architectural Versatility:** Tubular structures offer great flexibility in design. Their curved shapes and clean lines can create visually striking and modern architectural features. They can also be easily integrated into various building styles.

# Project 02 - Thakur Industries

Location - Hosapete, Karnataka

Types of Structure - Tubular / PEB Structure

THAKUR INDUSTRIES is in the industry of Metal Ore Mining

# 08



## Overall View real time in Site

### Benefits of PEB Structures

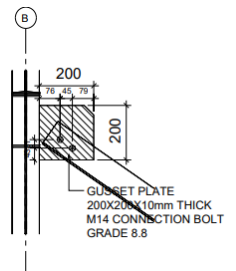
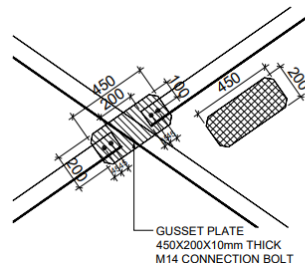
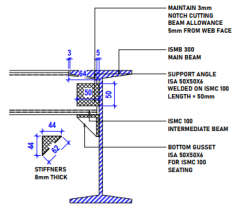
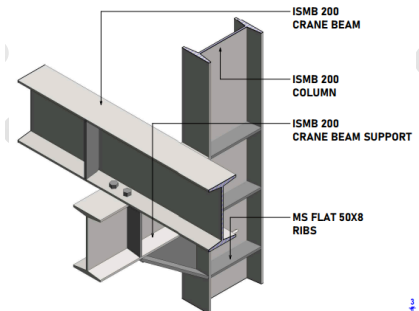
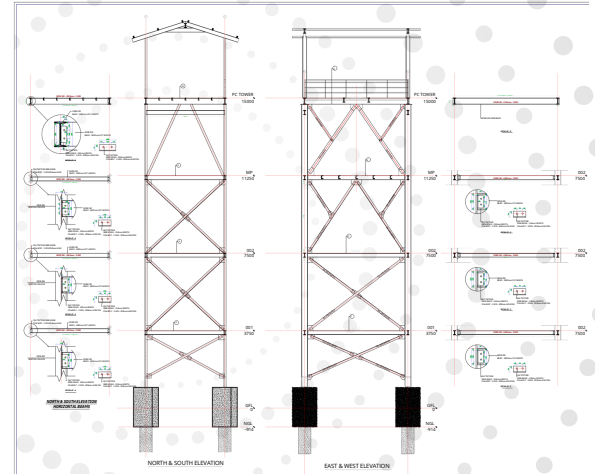
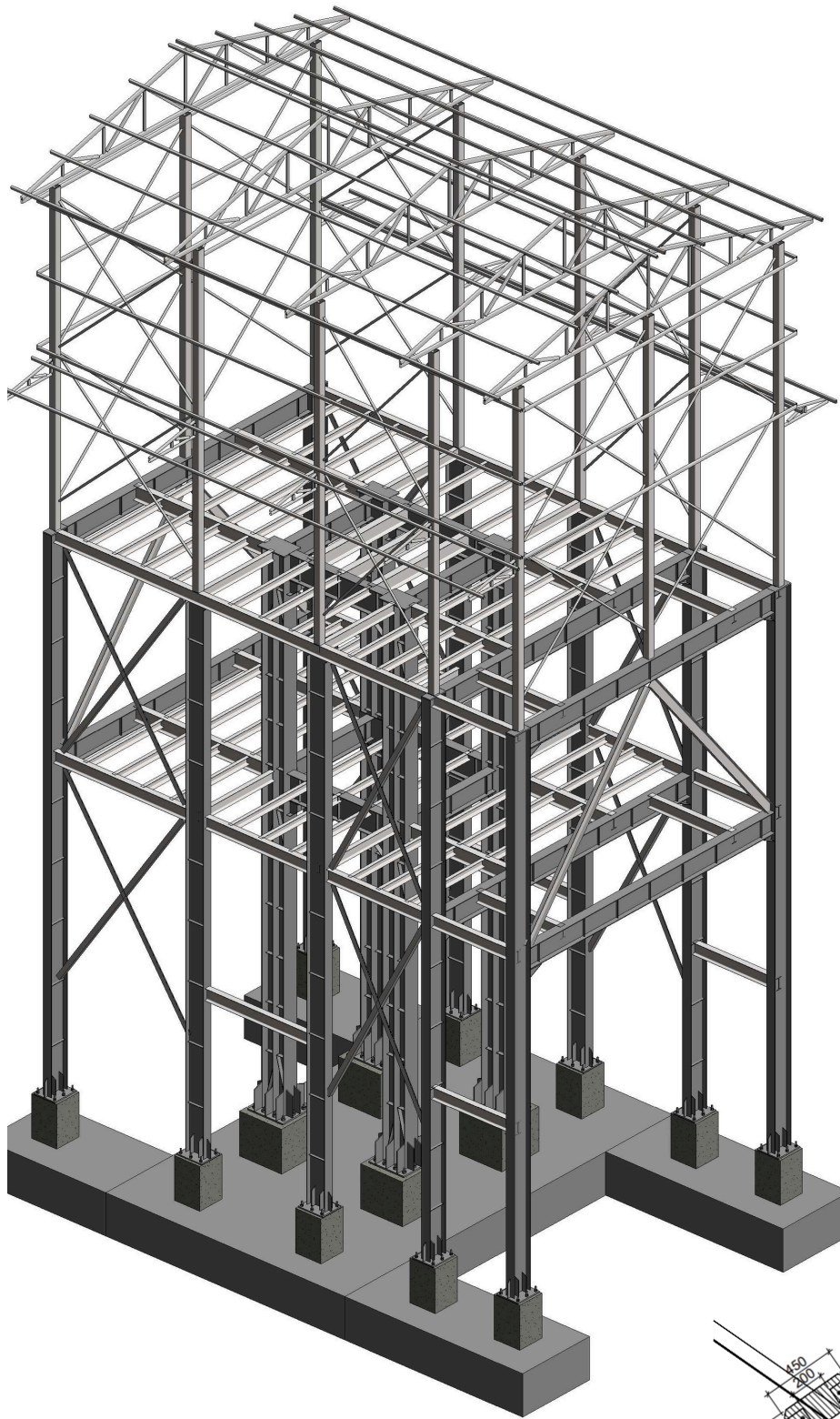
PEB structures, also known as pre-engineered buildings, offer a multitude of benefits compared to traditional construction methods

- **Adaptable Designs:** PEB structures can be customized to suit various needs and applications. They can be easily expanded or modified in the future to accommodate changing requirements.
- **Clear Span Interiors:** The use of pre-engineered steel beams allows for large open spaces with minimal interior columns, providing flexibility for layout and efficient use of space.

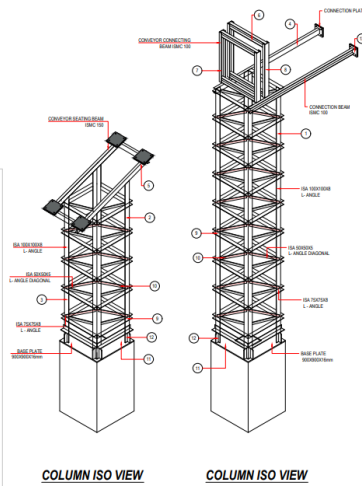
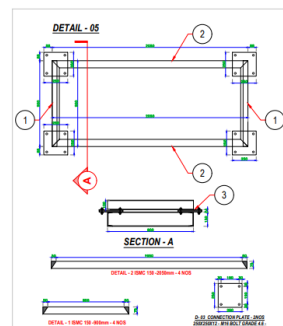
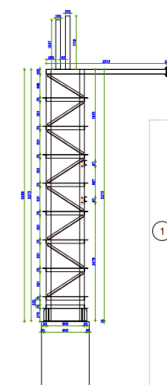
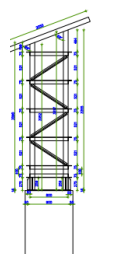
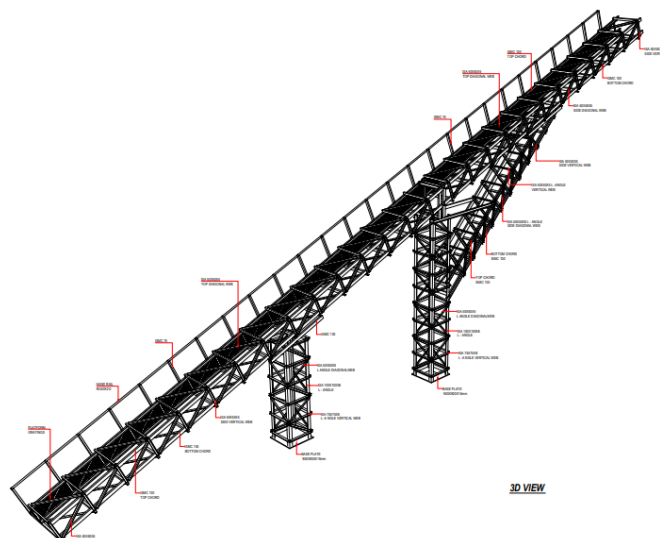
### Durability and Strength:

- **High Resistance to Elements:** PEB structures are built with strong, durable steel that can withstand harsh weather conditions, including high winds, heavy snow loads, and even seismic activity.
- **Low Weight, High Strength:** PEB components utilize lightweight steel sections that offer exceptional strength-to-weight ratio. This makes them ideal for areas with specific weight limitations on structures.





## HGMS - Structures view



# Project 03 – G+2 Commercial Building

Location – visakhapatnam

Site Area – 3200 sqft

Types of Structure – Tubular / PEB Structure

This building ground & first floor has PEB Framing and second has Truss Framing

Cost Effective and Faster Construction

# 10



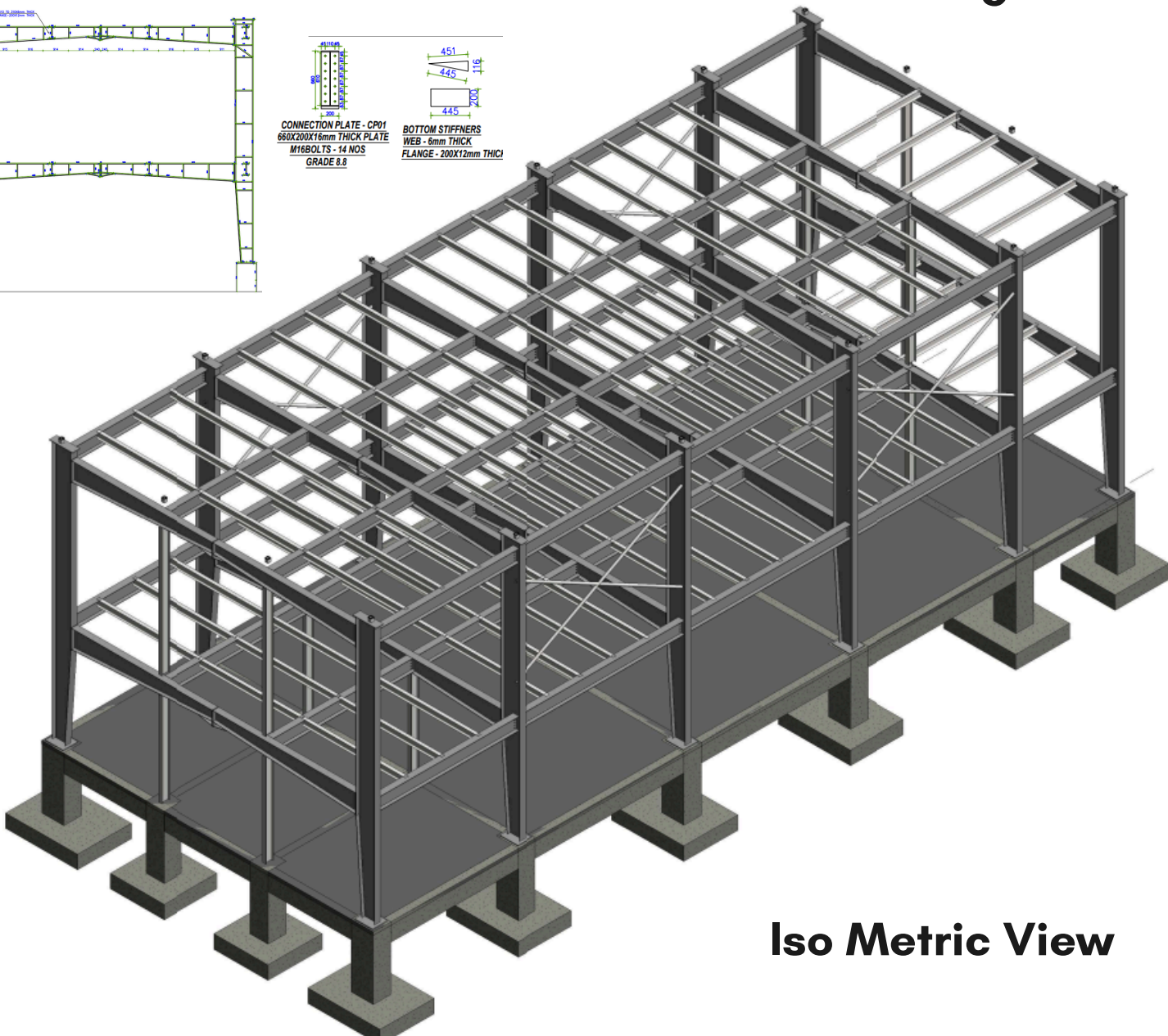
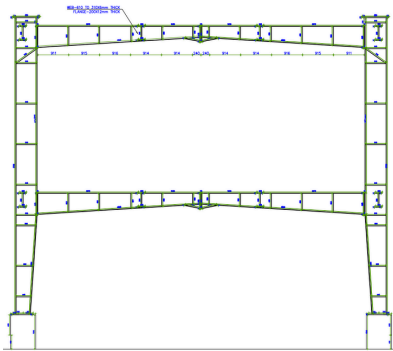
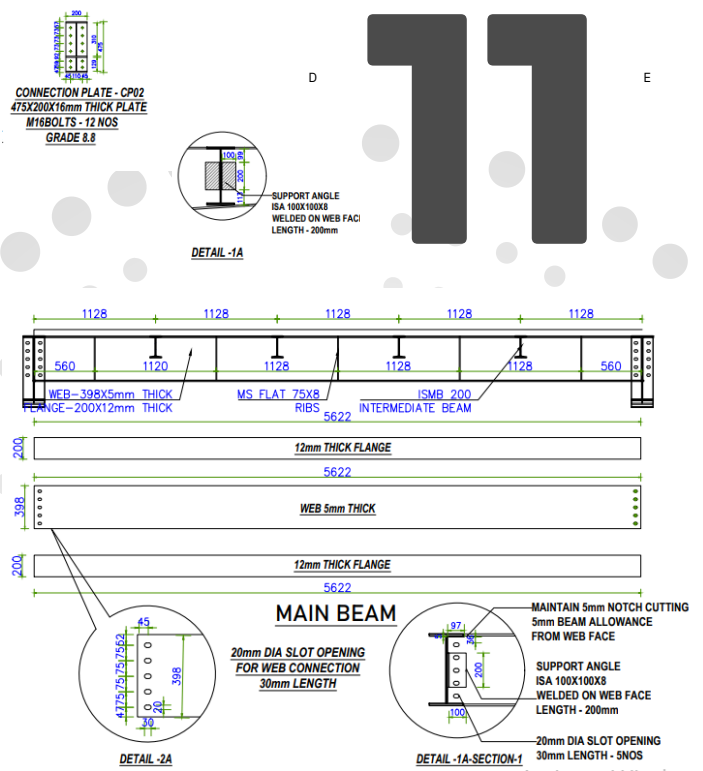
## Time Efficiency:

- **Faster Project Delivery:** The pre-engineered nature of PEBs allows for quicker design, manufacturing, and erection, leading to faster project completion and occupancy.
- **Reduced Disruptions:** Less on-site work translates to minimized disruption to existing operations or surrounding areas, making PEBs ideal for tight schedules or locations with activity limitations.

## Design and Versatility:

- **Adaptable Designs:** PEB structures can be customized to suit various needs and applications. They can be easily expanded or modified in the future to accommodate changing requirements.
- **Wide Range of Uses:** PEBs are suitable for a diverse range of applications, including warehouses, factories, workshops, sports complexes, and even commercial buildings.
- **Clear Span Interiors:** The use of pre-engineered steel beams allows for large open spaces with minimal interior columns, providing flexibility for layout and efficient use of space.






## Iso Metric View



12  
SURESH

ONE WHO DRAFTS A PLAN OF YOUR HOUSE, AND PLANS A DRAFT OF YOUR MONEY.

Join us in shaping the future

 No.29, 1 st , Ramachandra Nagar, Edamalaipatti Pudhur Trichy - 620012

 +91 9791507858

 stw2024drive@gmail.com